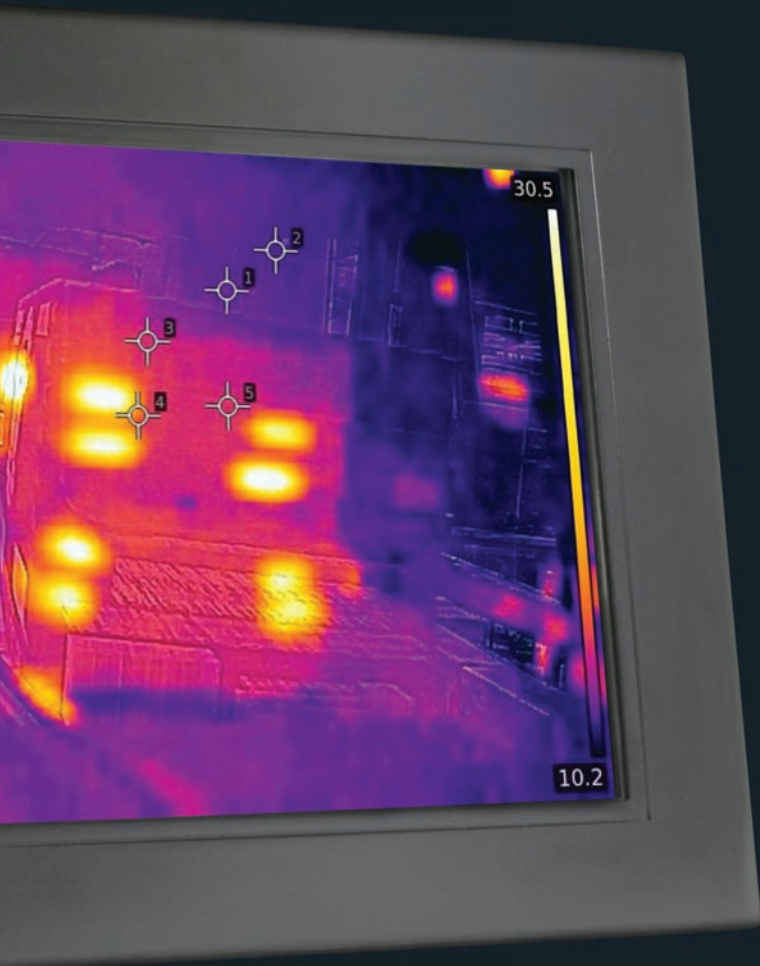


HOTSPOT™ HOT GLUE INSPECTION



Bytronic
AUTOMATION

HotSpot™ uses non-contact thermal imaging technology to deliver the perfect solution for hot-melt glue application quality control.

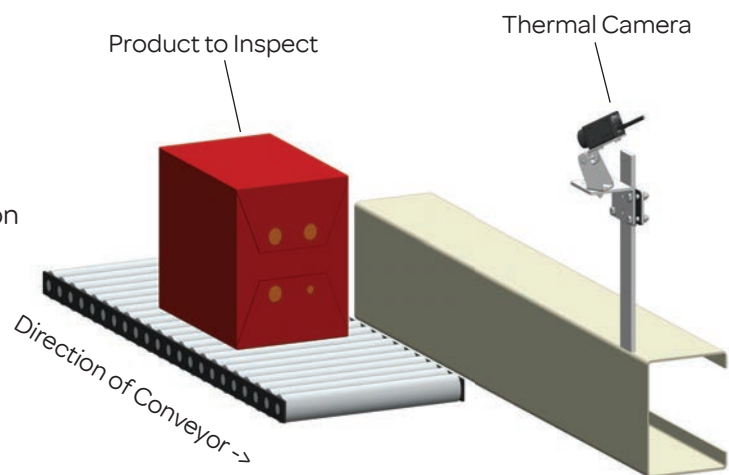
Ensure that every pack is correctly glued and folded without manual inspection.



Check that every one of your packs is correctly folded and properly sealed

HotSpot™ is simple to install, setup and integrate with machine control to reliably inspect your cartons.

- ✓ 100% inspection, zero contact with product
- ✓ Guarantee presence, location, size and temperature of every glue spot after application and folding
- ✓ Prevent collapsing multipacks
- ✓ Ensure pallet stability
- ✓ Eliminate customer complaints



How It Works

Cartons are formed then hot-melt glue is applied to the carton flaps. The flaps are then folded and sealed to the carton sides to complete the assembly. By inspecting that the glue is at the required temperature, has been applied to the correct area and in the desired quantity, you can be assured that the carton will not fail and is safe to be transported.

Missing glue means potential breakages in logistics or at the point of sale. Badly shaped cartons means poor product sales.

The HotSpot™ vision system uses one or more Thermal cameras to inspect the areas where the flaps are sealed. The thermal imaging camera is providing a measurement of the glue temperature and location, through the carton material. If HotSpot™ identifies a failure, the system can provide a digital output to the production line.

CONTACT

Innovation Campus, 33 Greenhill, Blackwell, B60 1BL UK

P. +44 1564 793174

E. enquiries@bytronic.com

bytronic.com